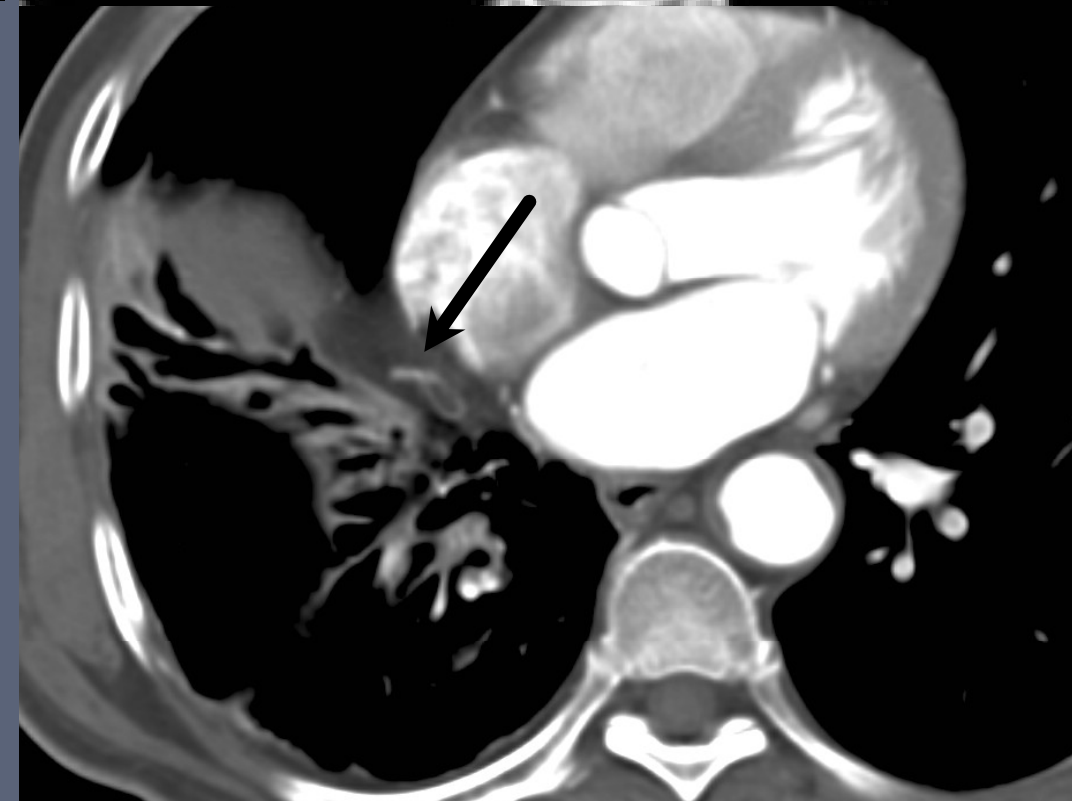
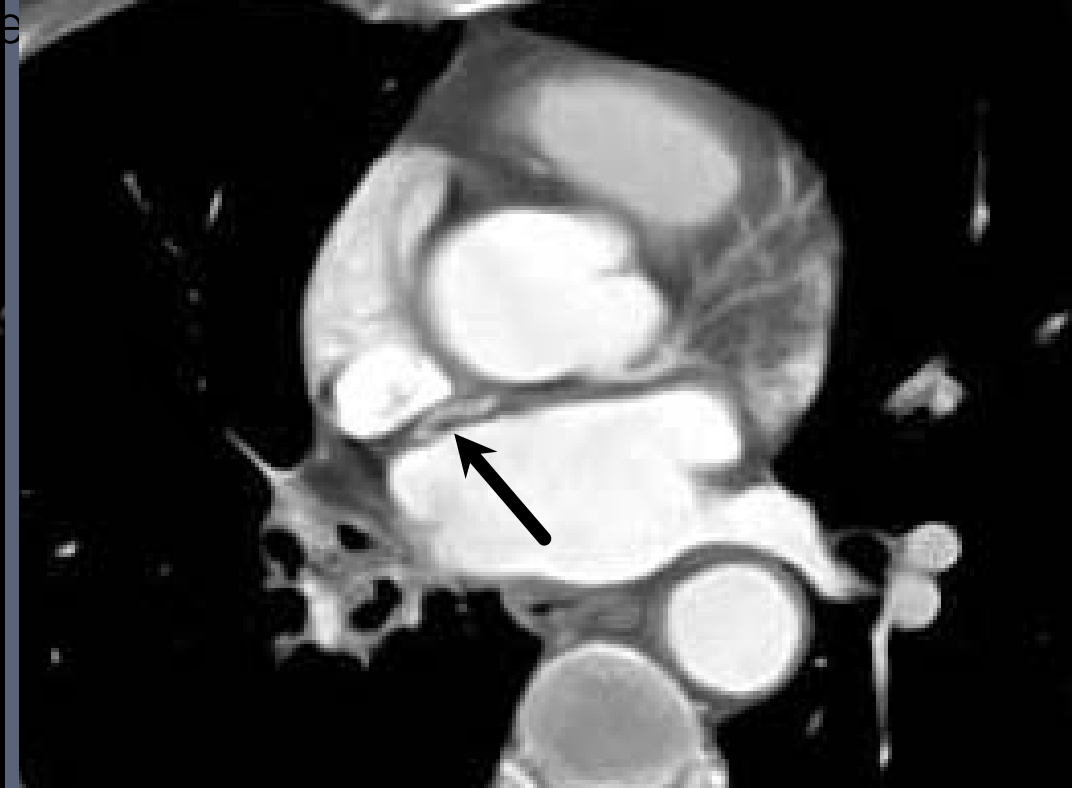
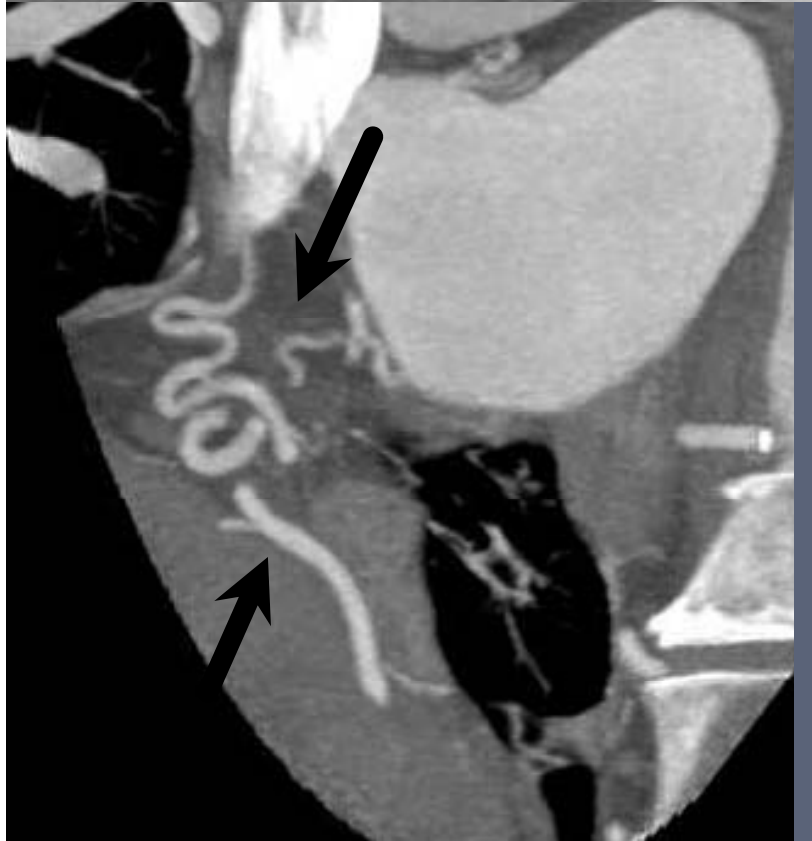
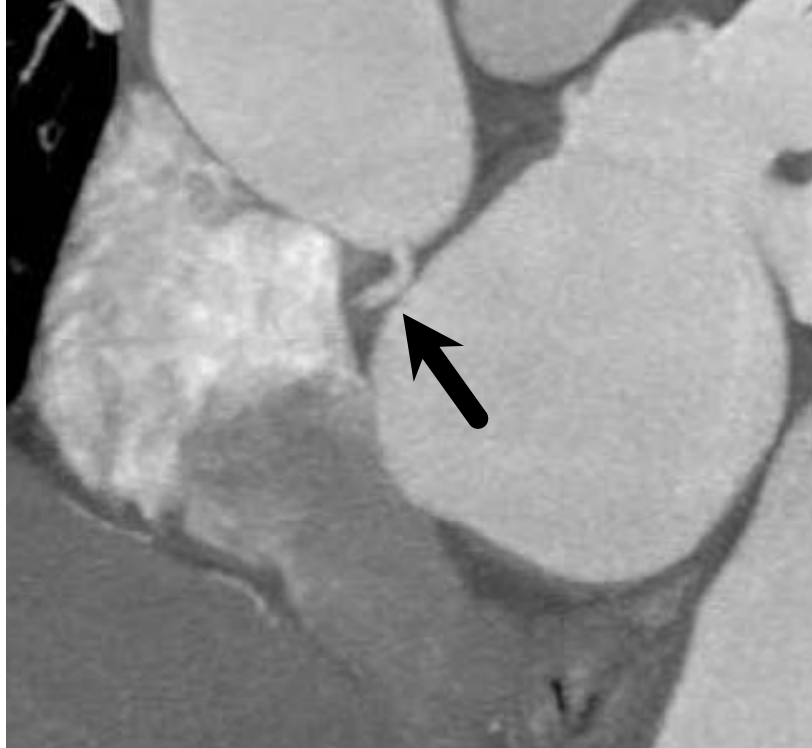


Case : 67yr / M

- **C.C: Intermittent chest pain
chronic cough**

**P.Hx; DM (+), HT (+)
Ex-smoker**





Radiologic findings

- RCA originated from the right coronary sinus and coursed through interatrial groove, which is connected to the right bronchial artery behind the right atrium.
- Bronchiectasis in RLL

Coronary-Bronchial fistula (CBF)

- CBF: 0.61% among the population undergoing coronary MDCT angiography
- Sx; most asymptomatic
 - coronary steal phenomenon (anigma, murmur..)
 - hemoptysis
- LCX- lt. bronchial artery (mc type)
- Type;
 - 1) Congenital CBF
 - 2) Functional CBF; underlying bronchiectasis
- ECG-gated MDCT with 3-D reconstruction is useful for diagnosis of CBF and their courses.