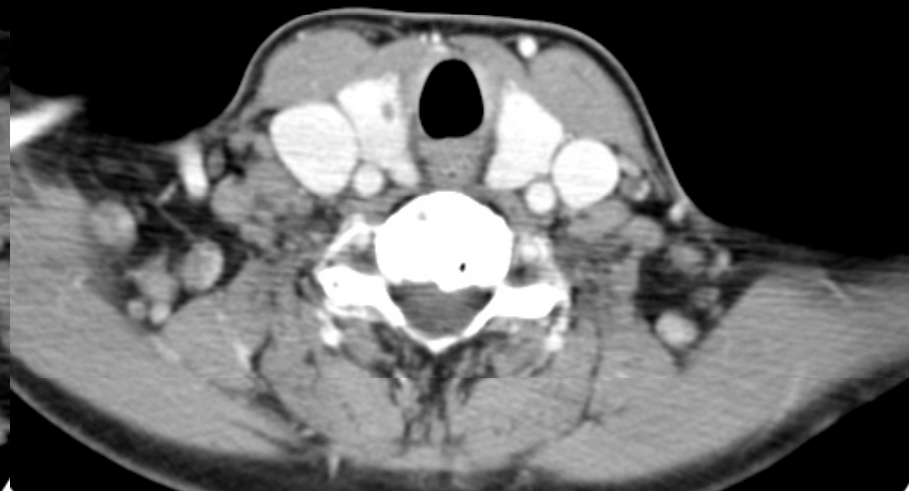
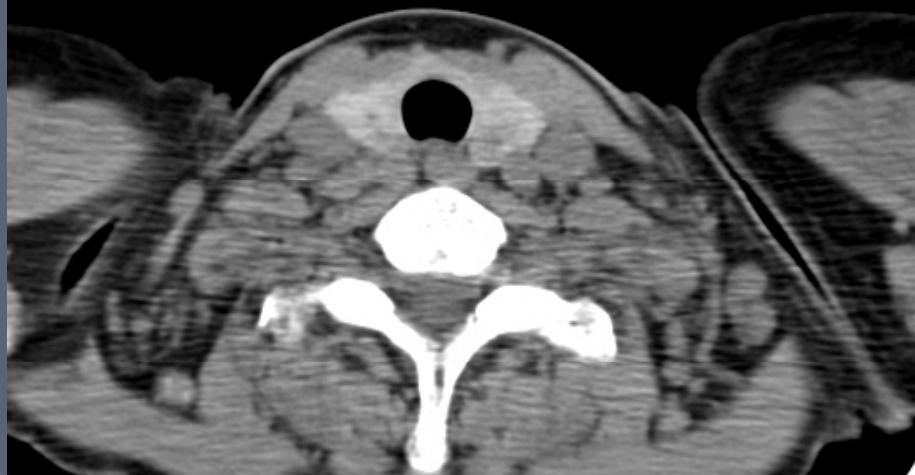
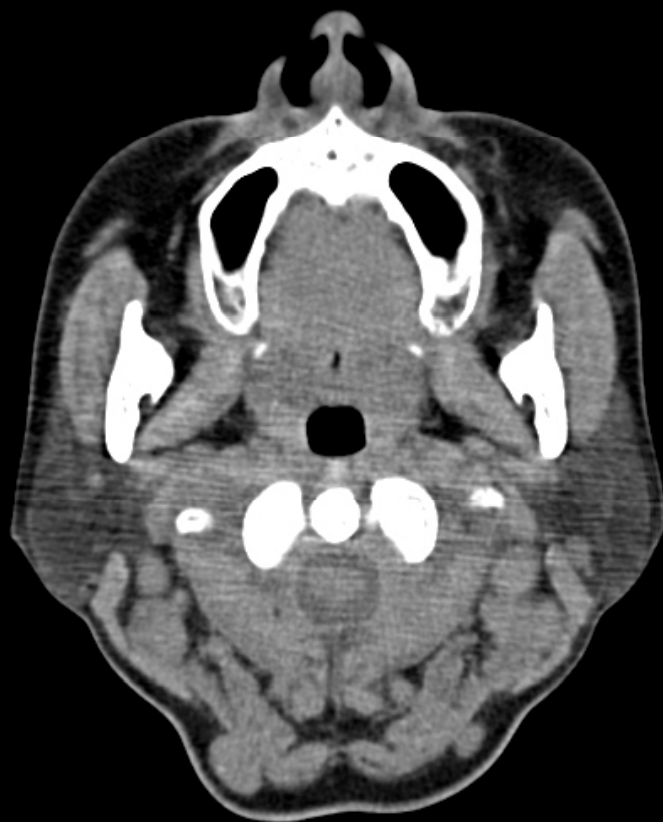


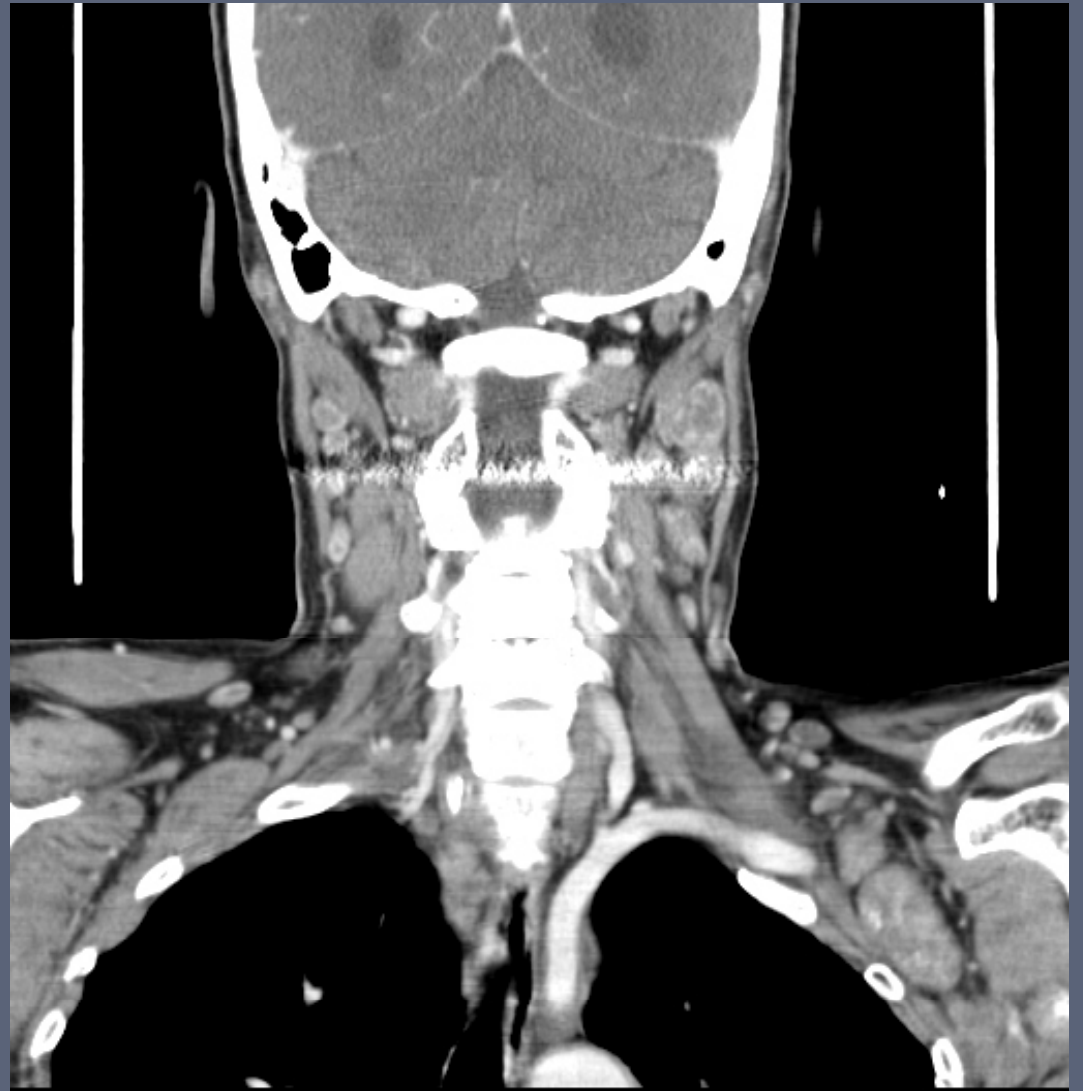
Case 3: 55yr / F

- C.C : palpable neck mass
- Past medical history:
 - 3 months ago → intraarterial thrombolytic therapy for acute infarction of left MCA territory

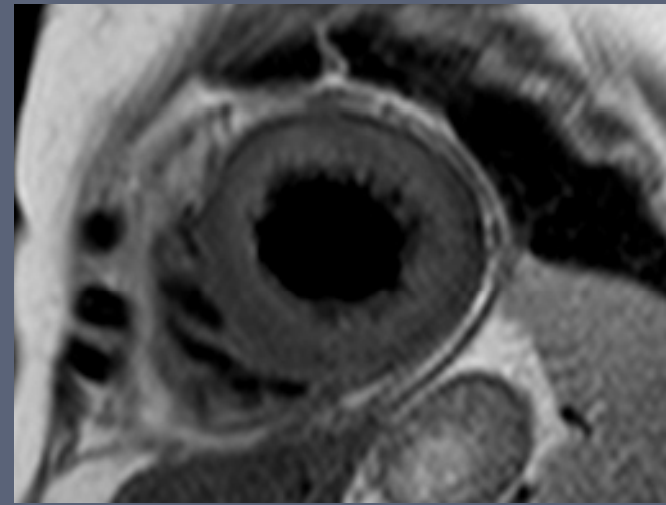
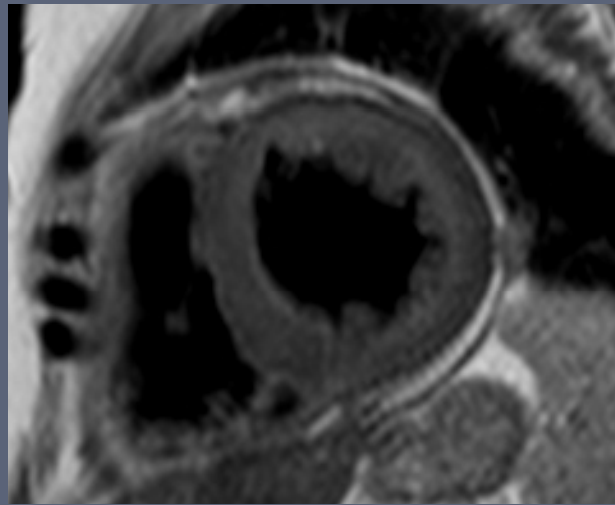
Presented by Joon Won Kang, Tae-Hwan Lim.

Ulsan University Asan Medical Center (AMC), Seoul, Korea

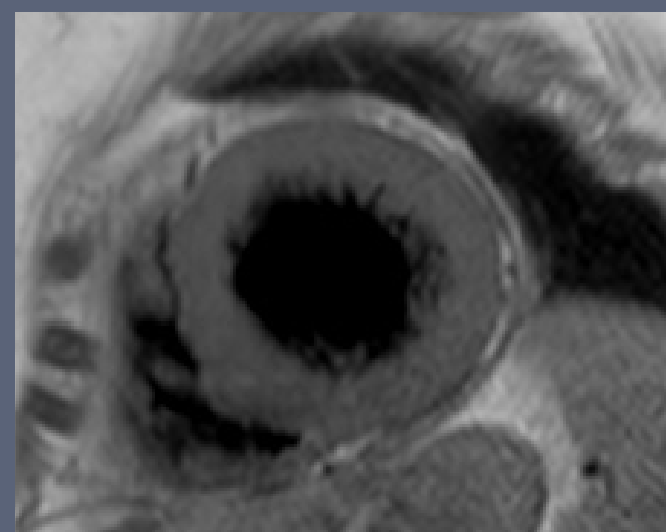
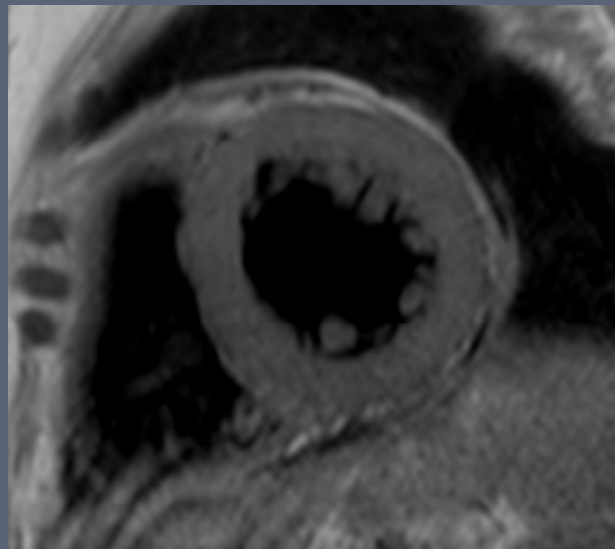




T2WI



T1WI



**Delayed-
enhancement**

